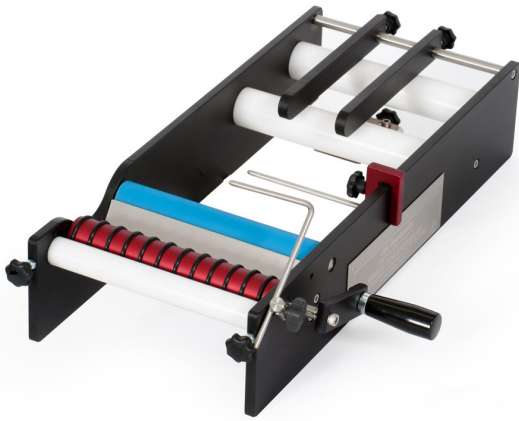


BenchMATE Labelling Machine



The BenchMATE Labelling Machine is ideal for short run labelling needs

Product summary

- The BenchMATE will apply a single label or a front and back label professionally and is faster than all semi automatic labellers with the exception of others within the Great Engineering range.
- The BenchMATE is engineered to face the harsh environment of all production lines.
- The BenchMATE will grow with your business with optional extras that can be added on request, including the Small Container Adapter and Top Roller Assembly.
- The BenchMATE comes with a 5 year warranty so you can be assured you will be covered in your most critical production times.

Sensor type	On edge, no registration mark required
Wastage per roll	130mm
Type	Pressure sensitive, die-cut, roll-formatted, fan folded Opaque, clear, translucent
Container	Round
Diameter	Minimum 55mm Maximum 250mm
Speed	Front & back 10 - 12 bottles per min. approximately
Construction	Anodized 6061 Aluminium Food grade Stainless steel shafts and bolts



Key points to consider

- Made in Australia
- Food grade stainless steel shafts and bolts, along with anodised aluminium parts
- Unique manufacturing processes have been put in place to ensure the machines are stronger and the parts stay aligned
- Most accurate, reliable and cost effective machines on the market to date